

旧梶村家住宅 位置図



対象施設: 津山市東新町40

縮尺 1 : 2500

201505 0 10 20 30 40 50 60 70 80 90 100 110 120 130 140 150 160

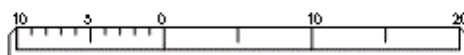


旧梶村家住宅 航空写真



対象施設：津山市東新町40

縮尺 1 : 500







旧梶村家住宅

外観



外観



母屋外観













旧梶村家住宅

母屋 内部

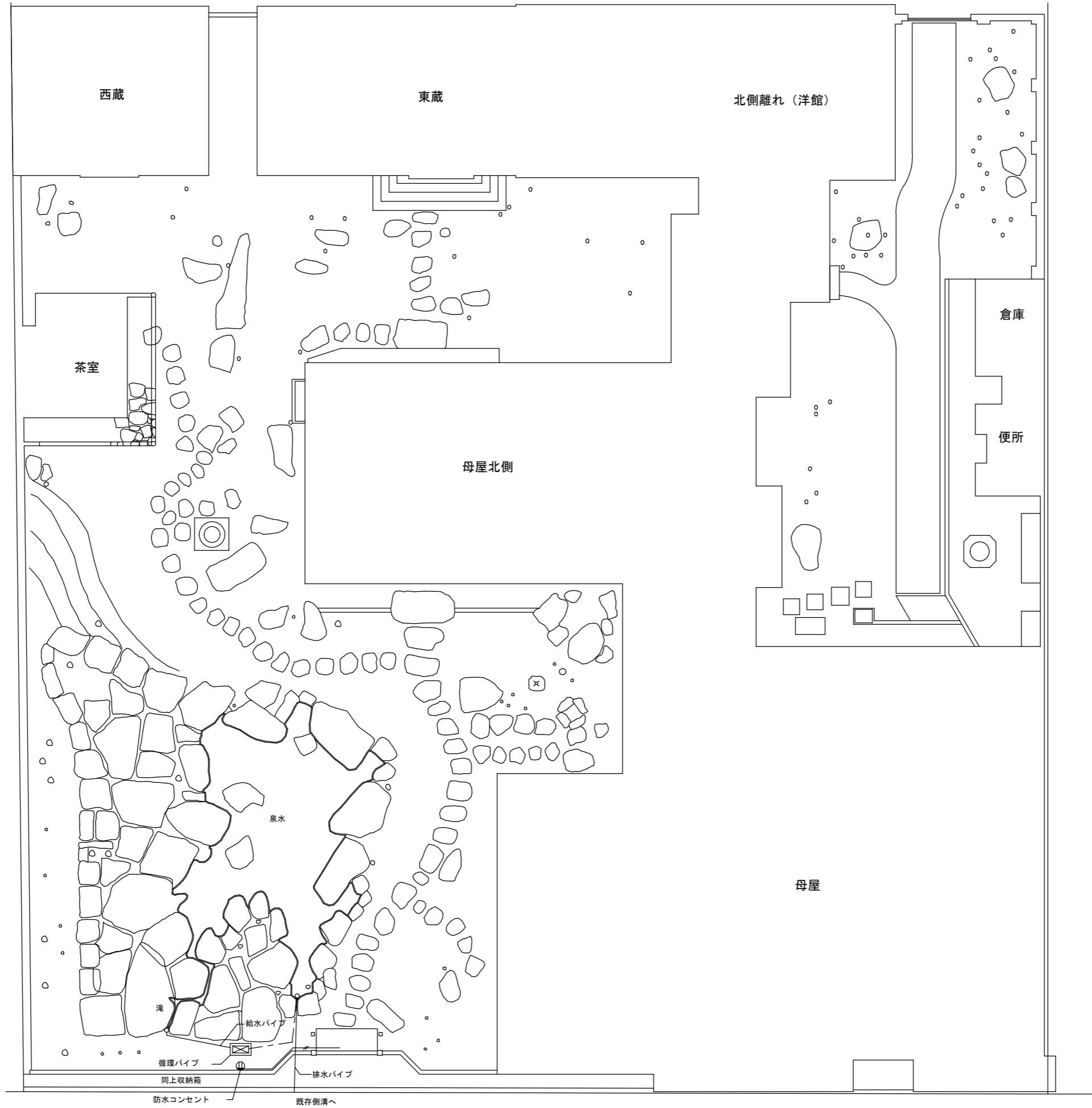


母屋北側 内部



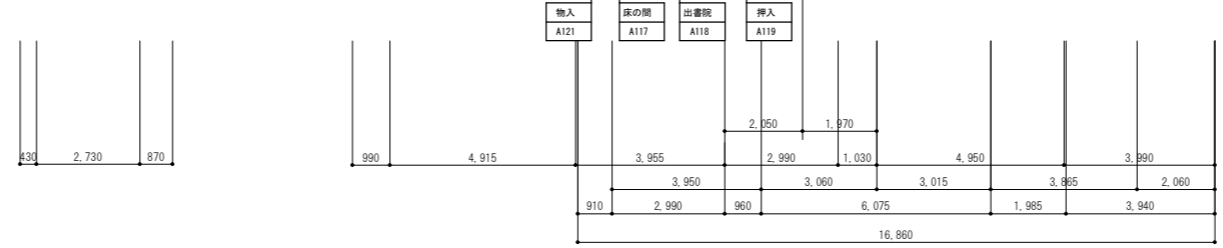
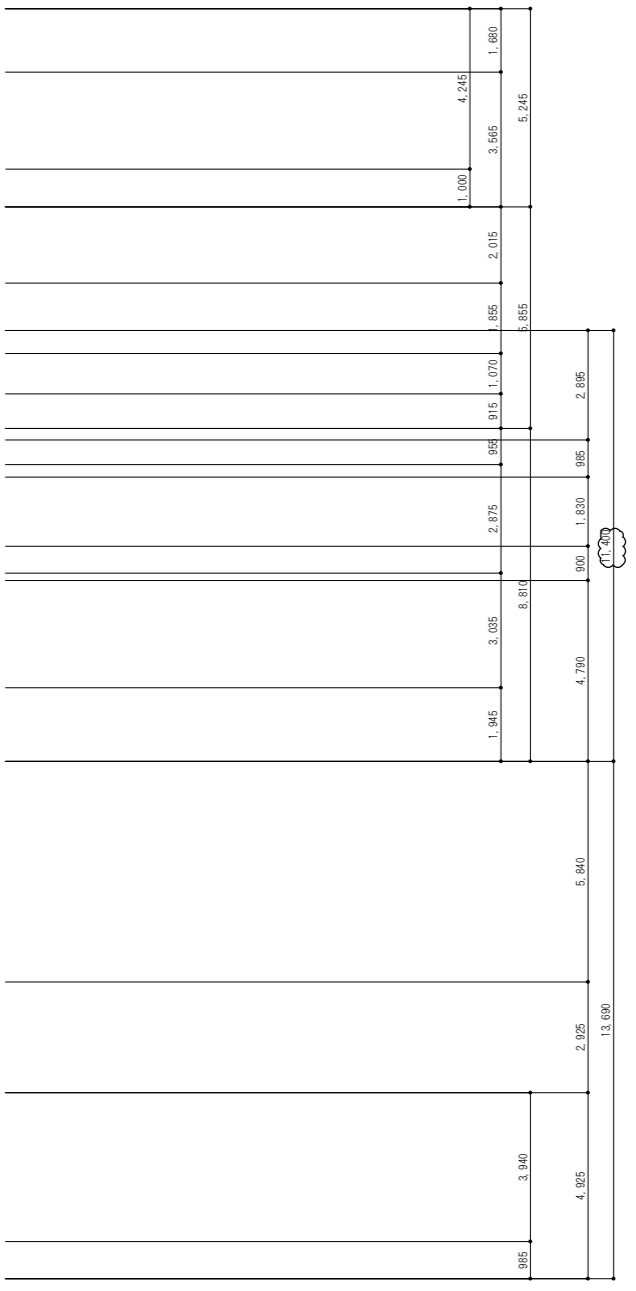
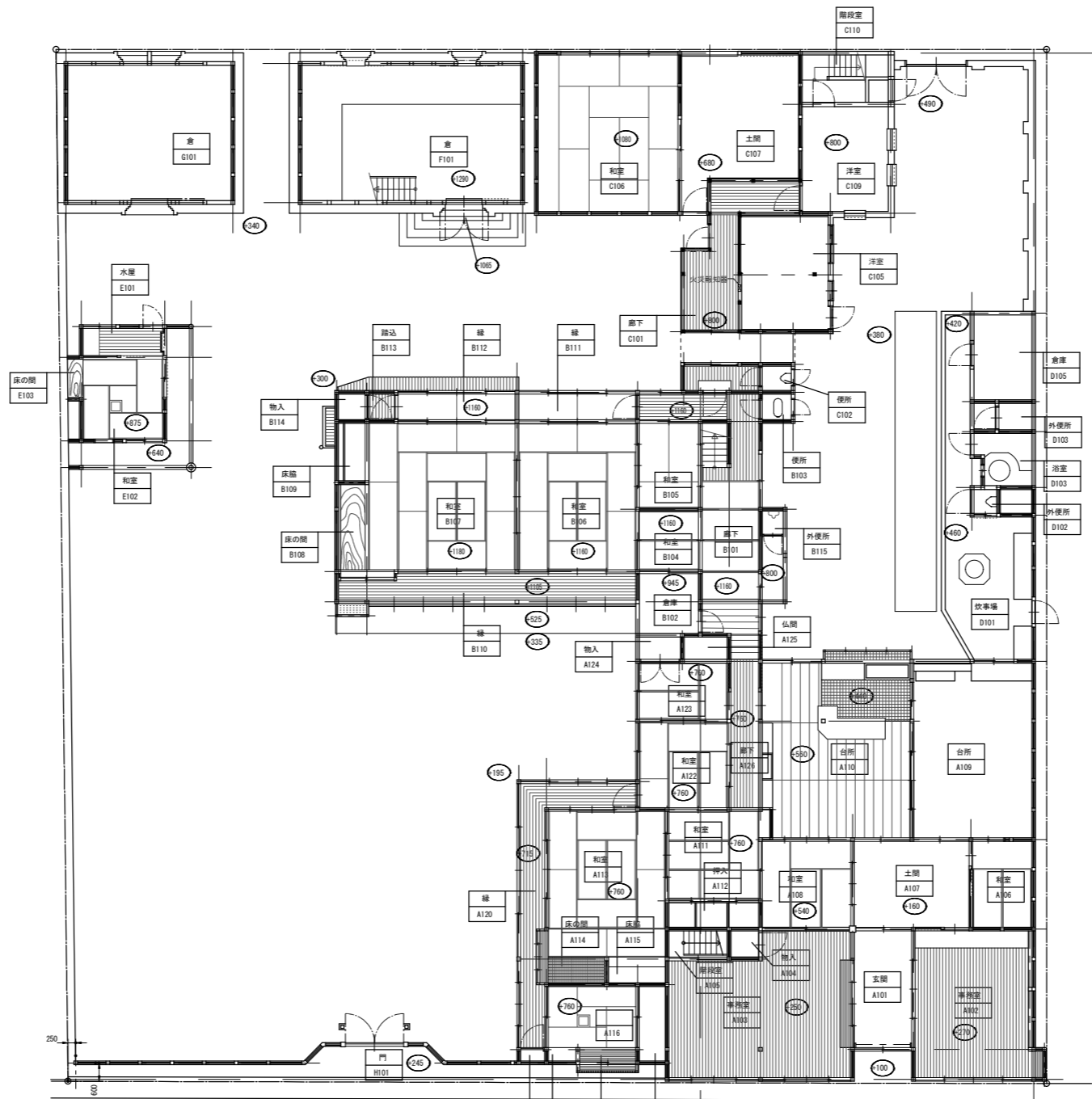
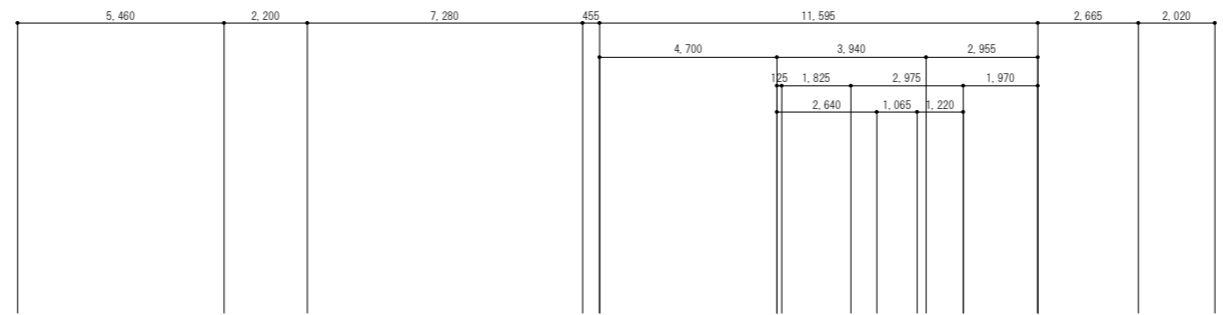
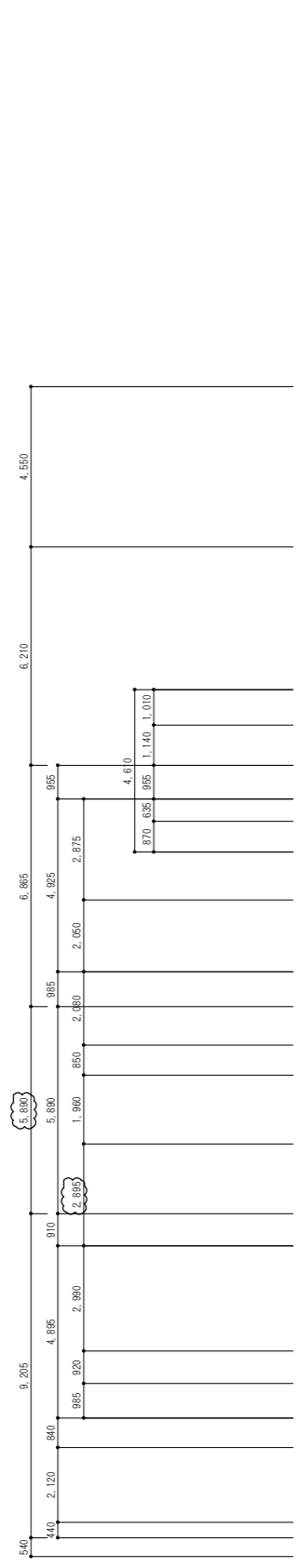
北側離れ(洋館) 内部





配置図

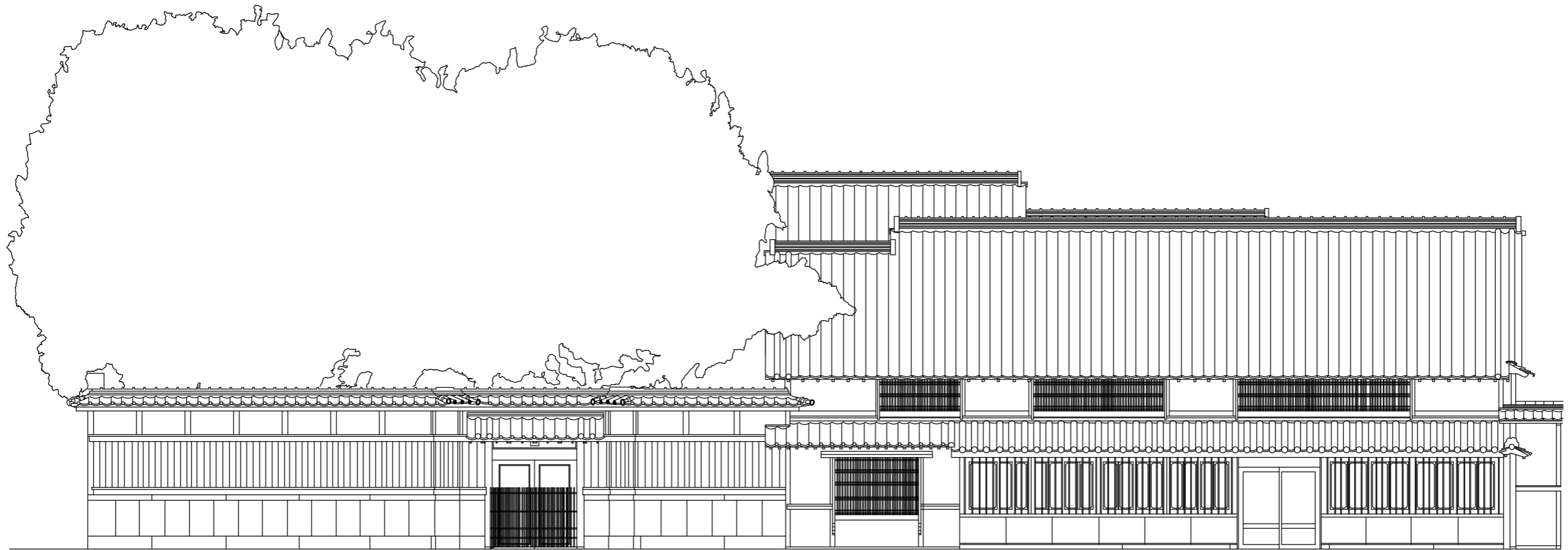




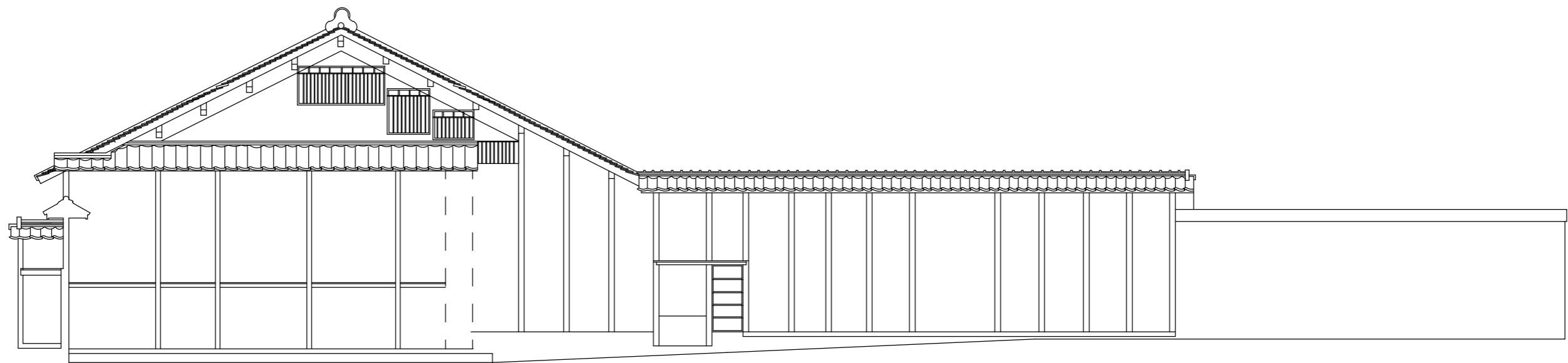
1階平面図 S=1/100







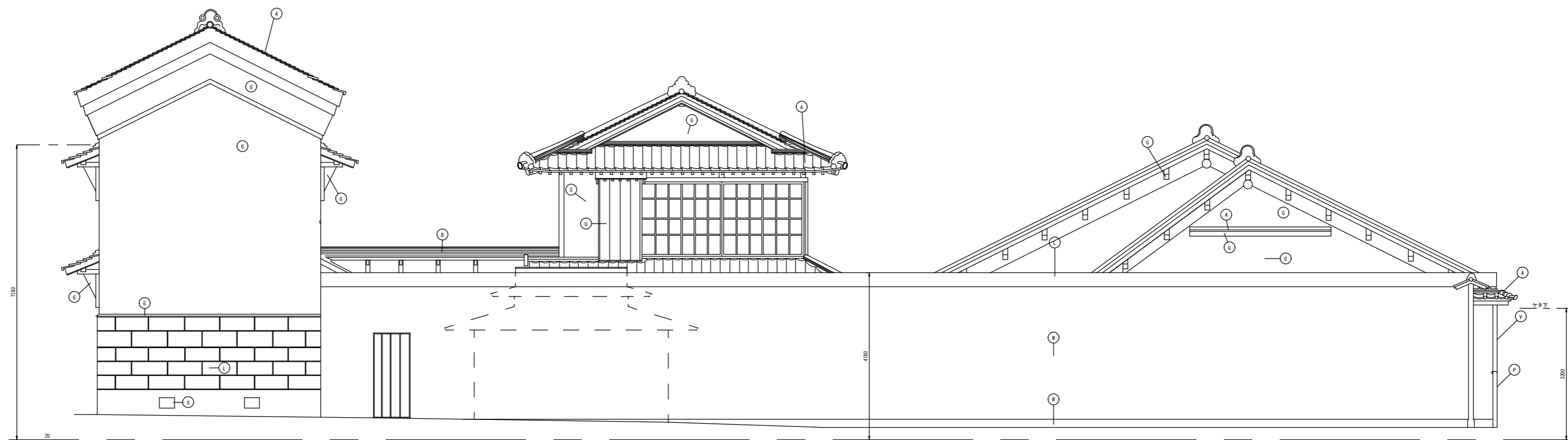
A 1 立面图 1:50



A 2 立面图 1:50

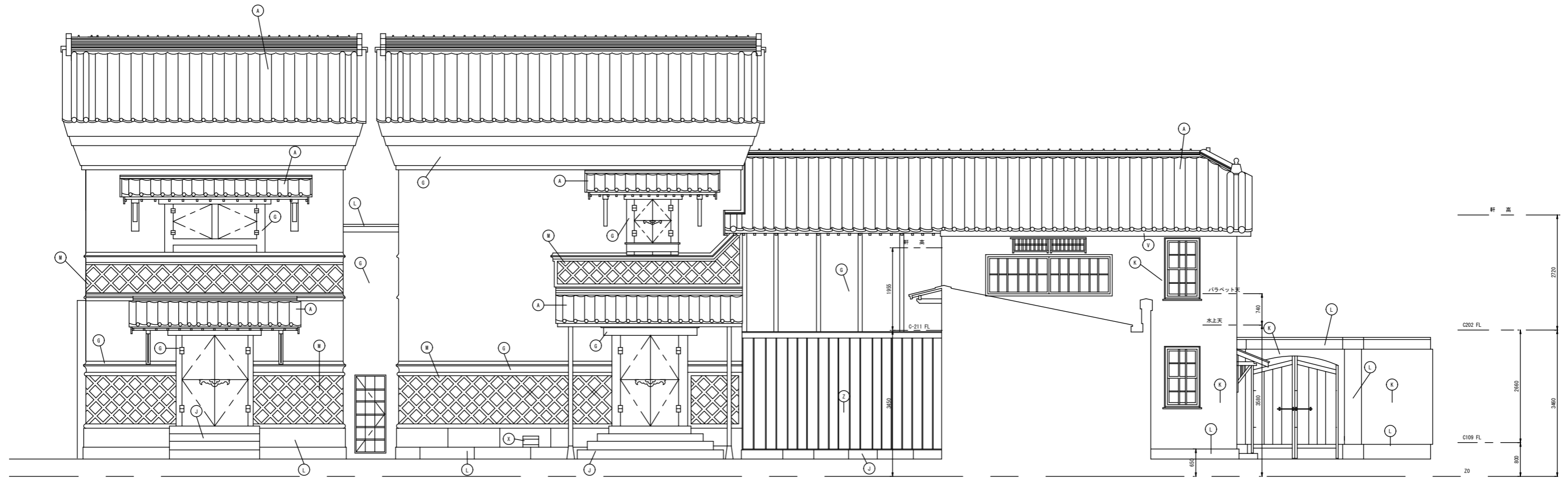


B 1 立面图 S=1:50

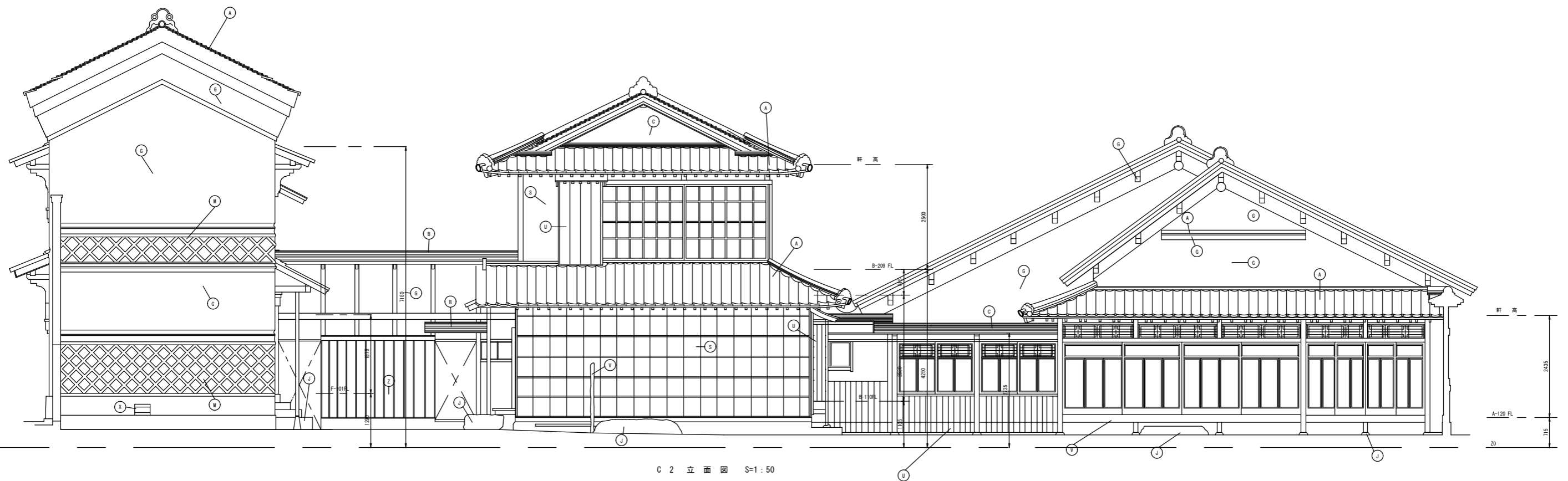


B 2 立面图 S=1:50

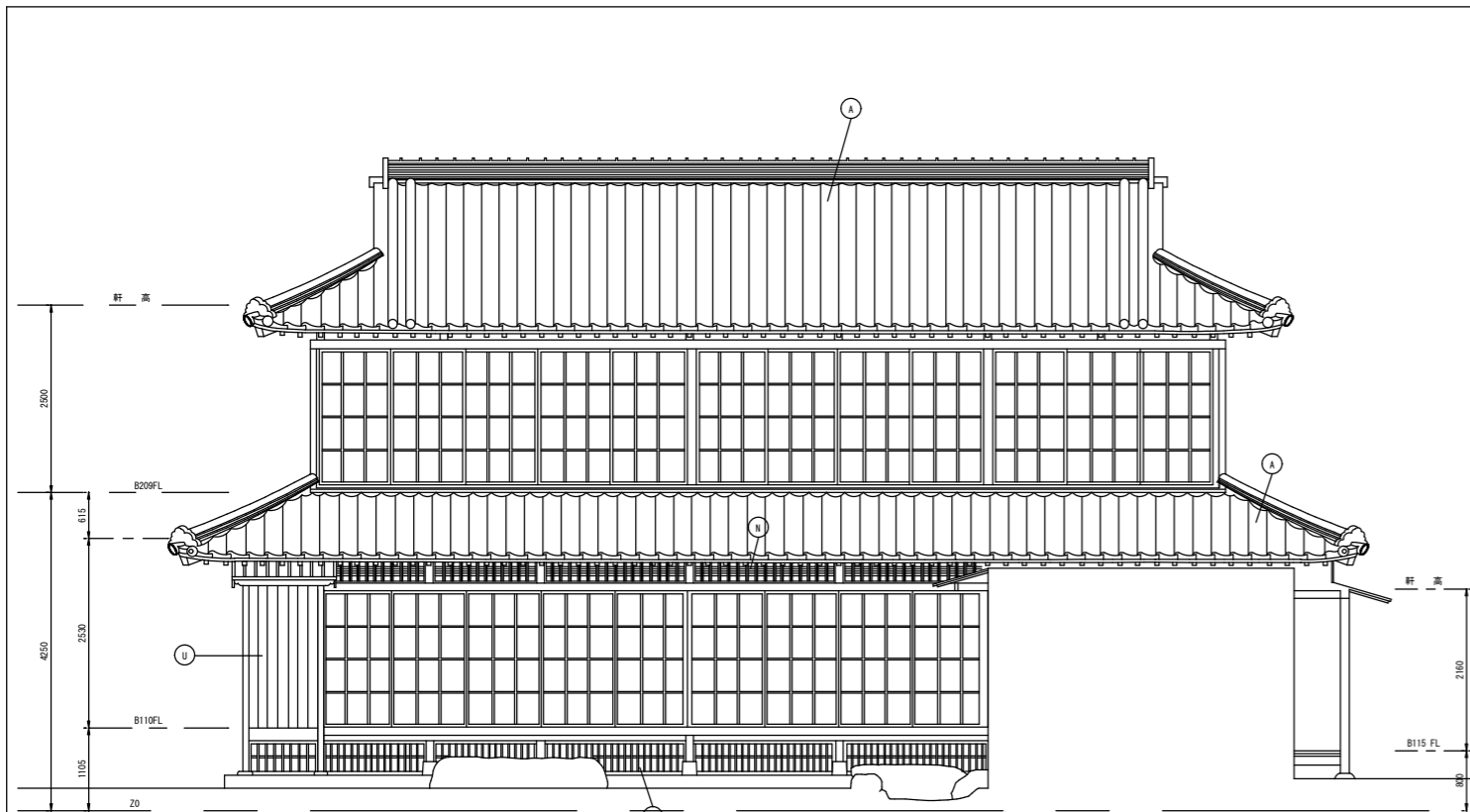




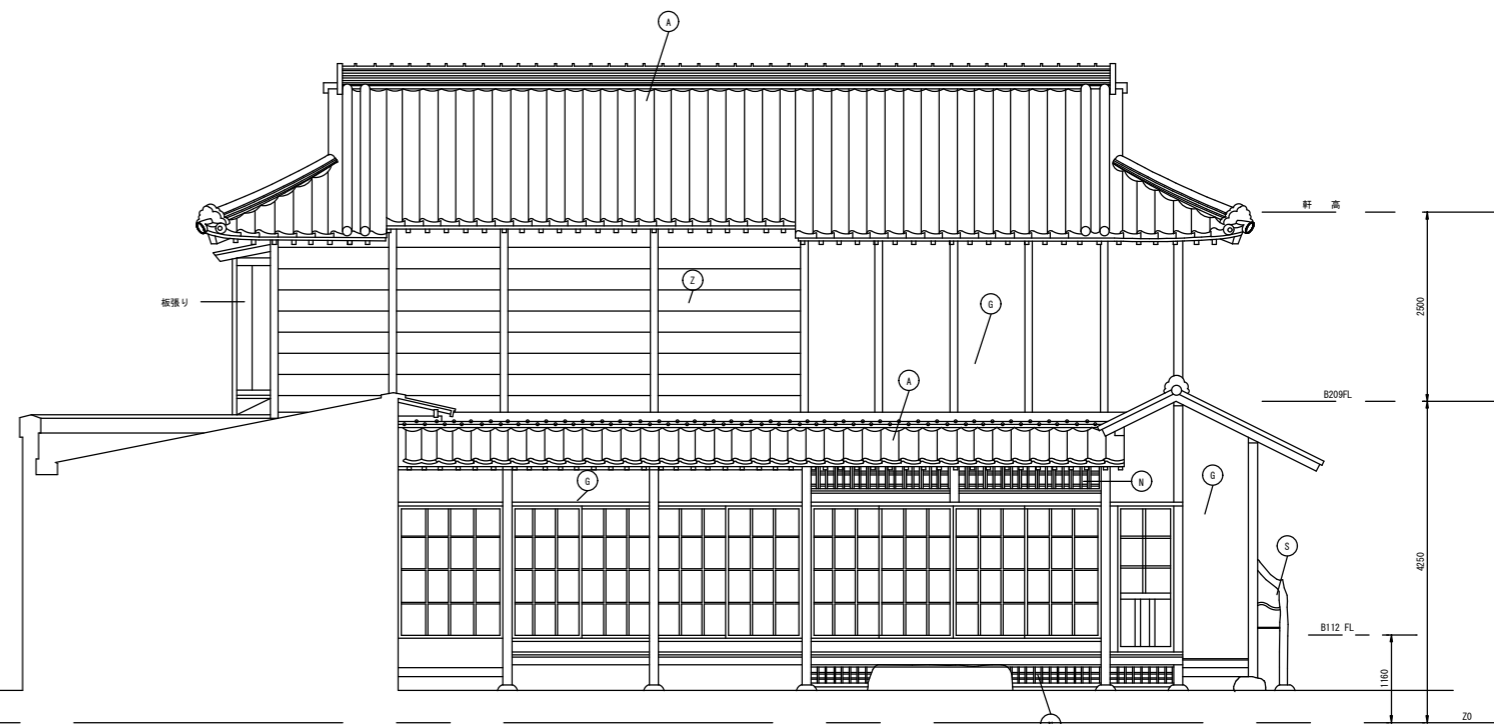
C 1 立面图 S=1:50



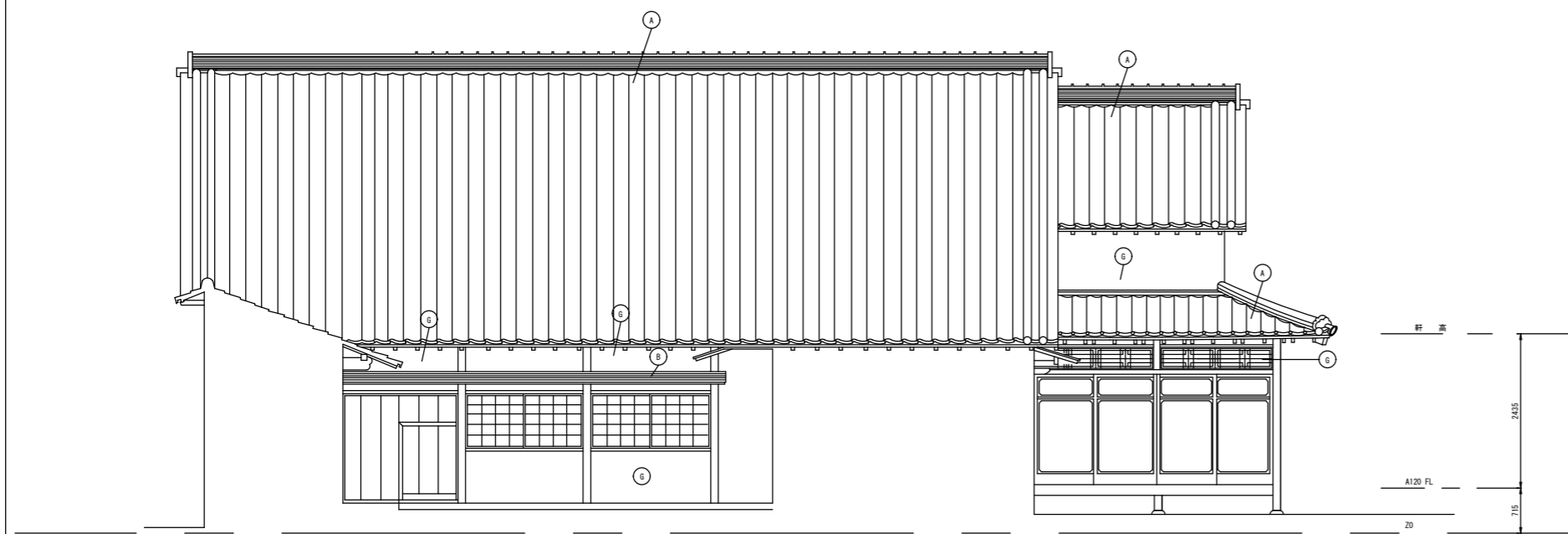
C 2 立面图 S=1:50



D 1 立面图 S=1:50



D 2 立面图 S=1:50



D 3 立面图 S=1:50



